



seats for your senses
www.pressalit.com

PRESSALIT®
seats



AutoClose® by Pressalit



Instruction manual AutoClose® by Pressalit

Page

2-15

Before use

Congratulations on your new AutoClose® toilet seat.

Please read this instruction manual carefully before use and keep it in a safe place for later reference.

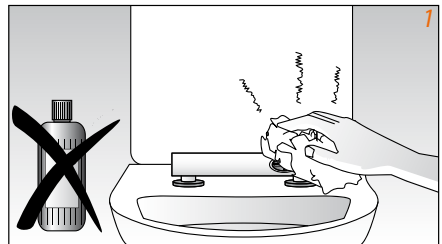
Make sure that the seat fits your toilet.

Check toilet pan on www.pressalitseats.com under "See what seats fit your toilet".

Cleaning

If you follow these simple rules, your toilet seat will stay beautiful for many years:

- Only use regular soap and water.
- Never use spirits or a hand shower to clean the console tube.
- Do not leave the seat damp - always dry it with a cloth after cleaning.
- Please do not use toilet cleaner or any abrasive, caustic or chlorine based cleaners as this can result in damage or flash rust. The toilet seat should be removed until the toilet cleaner has been flushed away.



Contents

GB

	Page
Before use	2
Cleaning	2
Contents	3
Use	4
The AutoClose® function	4
Extended opening	5
Manual closing	5
Description of quick-release	6
Mounting instructions, bottom mounted hinge	6-7
Mounting instructions, top mounted hinge	7
Battery change indicator	8
Replacing the batteries	8-11
Troubleshooting	12-15
Enclosed key	Backside

Registered design

Patent Pending

Maximum load 240 kg

CE



Guarantee

Pressalit offers a 10-year product guarantee for AutoClose® oilet seats excluding electronic components, which are guaranteed for two years.



Use

Get to know your toilet seat:

All Pressalit toilet seats are made from solid colour ingrained duroplast.

The seats are scratch-resistant and have a smooth easy-to-clean surface.

Functions:

Pressalit AutoClose® seats features a number of practical functions.

AutoClose®:

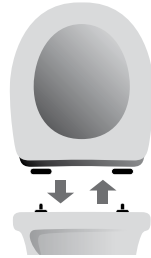
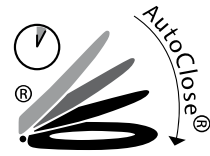
The seat and lid close automatically using a sensor.

Soft close:

The seat and lid lower softly and land quietly on the pan when released.

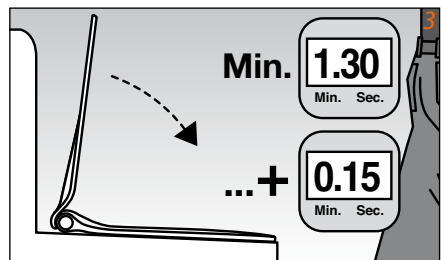
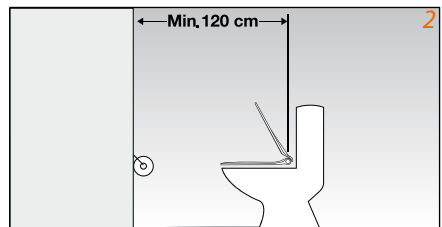
Quick-release:

The seat can be completely removed for easy cleaning.



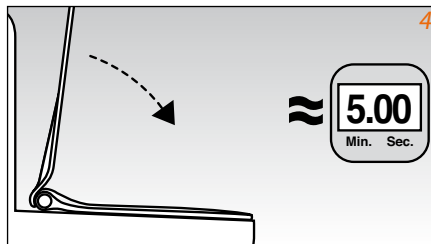
AutoClose® function

The toilet seat features an automatic closing mechanism that ensures that the seat closes by itself after use. A sensor located behind the console tube panel continually registers whether a user is present. As long as it registers the user, the seat/lid will remain open. When it no longer registers anyone, the seat/lid will automatically close after approx. 15 seconds. The lid will always remain open for a minimum of 1½ minutes. Due to the sensor, please allow a free distance of at least 120 cm in front of the toilet.

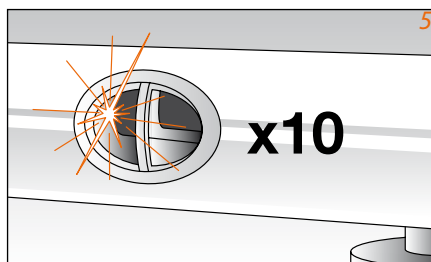


Extended opening

If you want the seat/lid to stay open for a longer period in connection with cleaning etc., simply open seat and/or lid and step outside out of the sensor's range.

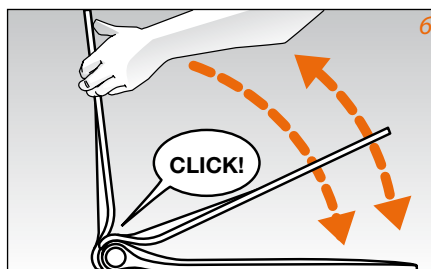


After about 15 seconds, the sensor will flash 10 times in quick succession to show the extended opening mode has been activated.



Manual closing

If you want to deactivate the AutoClose® function or if the batteries are dead, the lid can be closed manually. When the lid is pushed downwards, you will hear a click. This is normal. When the lid is fully opened again, the AutoClose® function will be reactivated.



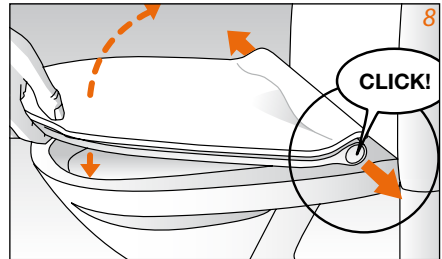
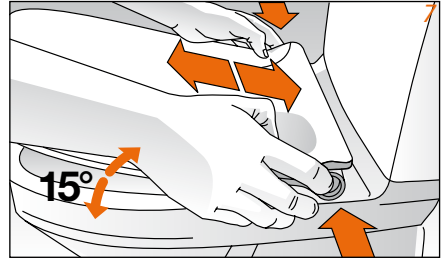
Description of quick-release

It is easy to remove the seat with quick-release in order to thoroughly clean the toilet pan and seat.

Raise the seat to an angle of approx. 15 degrees, push the buttons at the sides and lift off the seat.

Remount the seat by pressing the buttons and placing the seat over the console tube. Release the buttons.

Open and close the seat and lid until the buttons click into place.



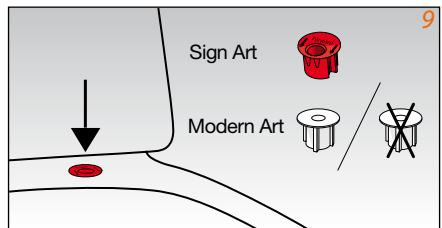
Mounting instructions, bottom mounted hinge.

If top mounted go to picture 13.

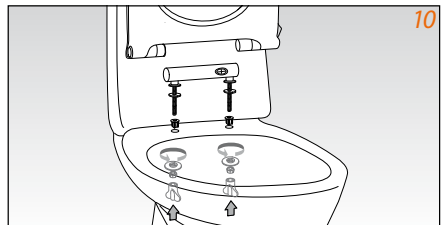
Insert bushings

Note: Use the white bushings if they fit.

If not, leave them out and mount the fitting without bushings.

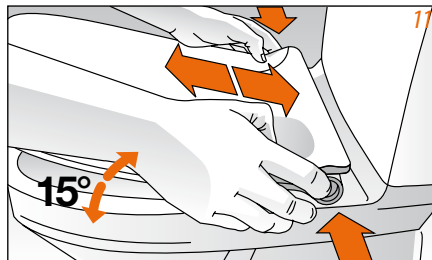


Mount the console tube as shown in picture 10.



Mount the seat by pressing the buttons and placing the seat over the console tube.
Release the buttons.

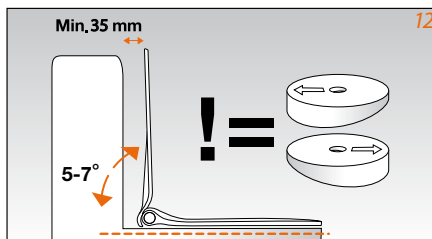
Open and close the seat and lid until the buttons click into place.



If the seat and lid tend to fall over in open position replace the plain rubber disc with one or two of the enclosed oblique washers in each side.

Pay attention to the arrow's direction.

Check that the distance between top of the lid and wall is minimum 35 mm.



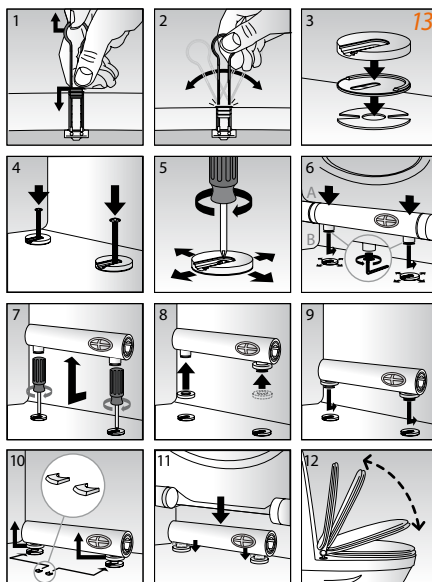
Mounting instructions, top mounted hinge

See the mounting instructions in picture 13.

If the seat and lid tend to fall over in open position replace the plain rubber disc with one of the enclosed oblique washers in each side (see picture 12).

When placing the washer under the hinge, please be sure to make the arrow face down.

Also see quickguide



Battery change indicator

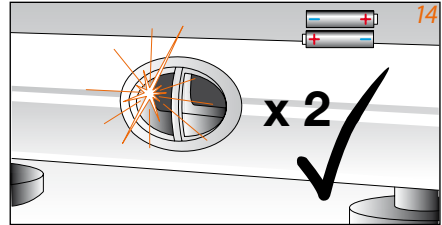
When the lid is opened, the red diode in the console tube panel flashes twice to indicate if there is sufficient power.

When the diode no longer flashes it is time to change the batteries.

You need to use 2 x AAA alkaline batteries (IR3-1.5V).

To change the batteries, see section on battery replacement.

Used batteries should be disposed at authorised collection sites.



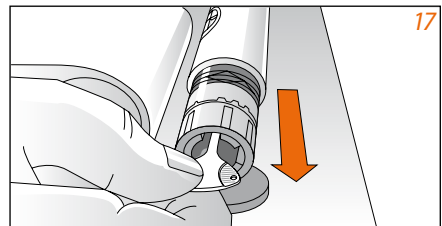
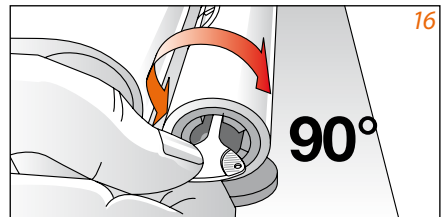
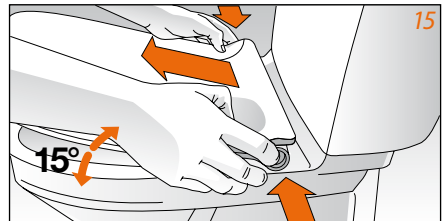
Replacing the batteries

- visit www.pressalitseats.com for step-by-step instructions.

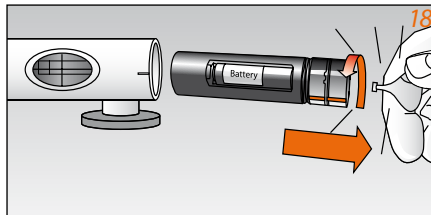
Lower seat and lid to horizontal position. Raise the seat to an angle of 15 degrees. Press the two buttons and remove the seat.

Use the key, which you will find on the backside of this manual. Slide the key through the oblong hole at the right end of the console tube and turn the panel 90°.

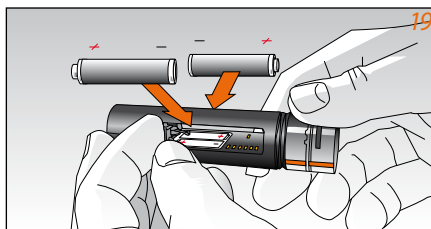
Pull out the locking module using the key.



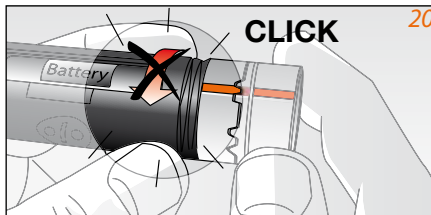
Turn and remove the key.



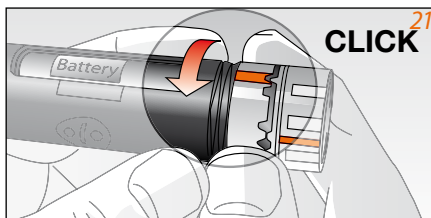
Insert the batteries with plus and minus as shown in picture 19. You will need 2 x AAA alkaline batteries (LR3 1.5V). Use high-quality batteries to avoid changing the batteries too often. Avoid changing the batteries over the toilet pan as you may drop the components.



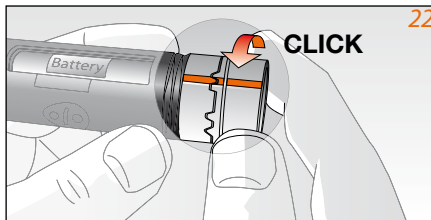
Check to see if the black tube can be turned. If not - proceed to picture 21, otherwise follow instructions in picture 20.



Turn the black battery tube until you hear a clicking sound or until it cannot be turned any further.

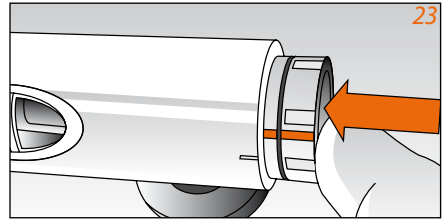


If the "teeth" in the two outer rings are not engaged, please do the following:
Turn the outer ring in the direction of the arrow so the line on the outer ring is flush with the line on the inner ring and you hear a clicking sound. The "teeth" will then lock into place.

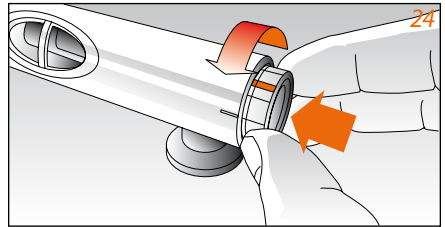


Replacing the batteries

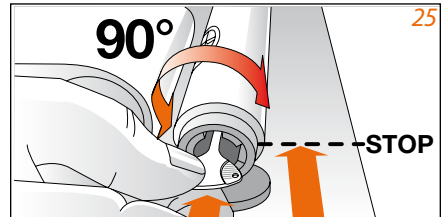
Gently insert the module.



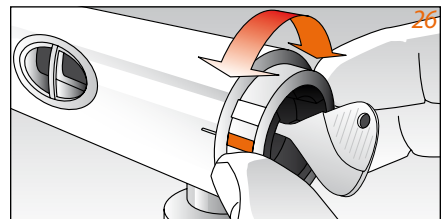
Turn and gently push until the module slides in and the black ring disappears into the tube.



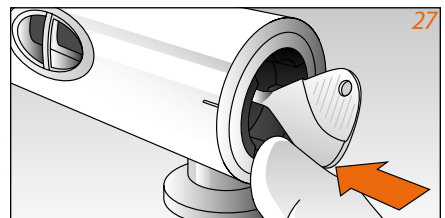
Slide the key through the oblong hole at the right end of the console tube and turn it 90°.



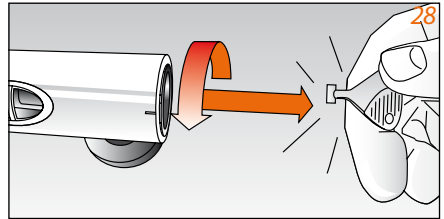
Turn the module until the red line is flush with the stamped line on the console tube. Note that the black ring must not be visible (see picture 24).



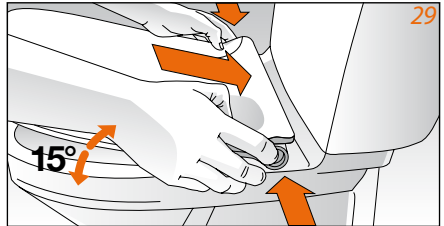
Press the locking module all the way in.



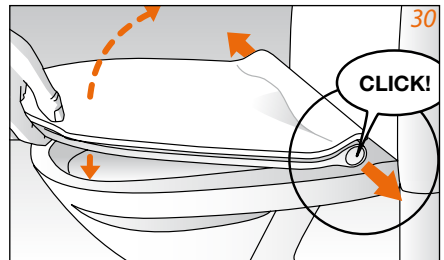
Turn and remove the key.
Save it for another time in the pocket on the
backside of this manual.



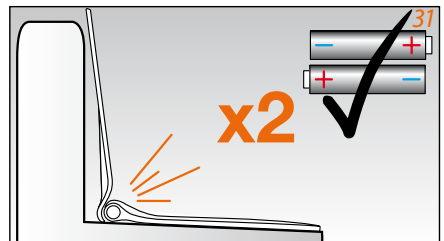
Press the two buttons and place the seat
over the console tube. Release the buttons.



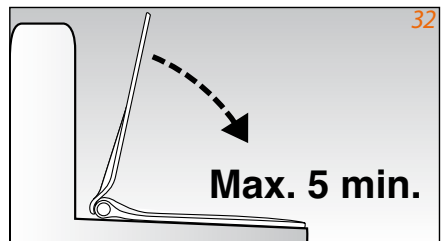
Open and close the seat and lid until the
buttons click into place.



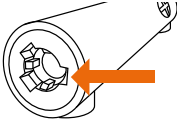
After this test that the red diode in the
console tube panel flashes when the lid is
opened.



Step away from the toilet and test that the lid
closes after app. 5 minutes.



Troubleshooting

<p>The seat falls down and/or the lid stays up.</p>	<ul style="list-style-type: none"> - First check whether the seat fits the toilet pan. – see www.pressalitseats.com and “What fits your toilet” - The distance from the wall/cistern must be no more than 14 cm. The distance ahead must be at least 120 cm. - The seat must be 5-7 degrees further back than 90 degrees to lock into place when open. - The seat could be mounted on a crooked toilet pan. Use the enclosed oblique washers to adjust the angle of the seat. See quick guide.
<p>The damper does not work after the seat has been removed and remounted.</p> 	<ul style="list-style-type: none"> - The QR pins are not engaged. Open and close the seat/lid several times until both buttons have snapped into place. (See seat when it has been removed). - If necessary, remove the seat from the toilet. Use the battery changing key with the handle facing forward and place it in the left side of the tube. You can now turn the Y leg forward towards yourself. The leg should be in the horizontal position after troubleshooting. Then attach the seat to the toilet again in the same position as it was taken off. We recommend 15 degrees.
<p>At what angle is the seat detached?</p>	<p>Place the seat/lid horizontally on the toilet. Lift the seat off at a 15 degree angle while pressing in the QR buttons on the side. Refasten by pressing in the QR buttons, pressing the seat down over the console at a 15 degree angle, and open/close the seat/lid a couple of times until the QR buttons pop out.</p>

<p>The damper does not work after the seat has been removed and remounted.</p>	<p>A step in the instructions for replacing the batteries was possible missed. Please follow the instructions on again, or find step-by-step instruction at www.pressalit.com/autoclose.</p>
<p>The seat does not close automatically.</p>	<ul style="list-style-type: none"> - When the lid opens, the sensor no longer flashes twice: The batteries need to be replaced. - If the problem occurs after the batteries have been replaced: Check if the batteries have been inserted correctly or whether the batteries have any power. Please use 2 x AAA alkaline batteries - The seat has gone into extended open mode: it closes after about five minutes. - The seat was pressed too far back. Push the seat forward to about 90 degrees upright. - The user or something else is in front of the sensor and in its range: 1.20 m.
<p>The locking module has fallen into the toilet in connection with battery replacement.</p>	<p>Remove the batteries. Allow the locking module to dry until all moisture has evaporated. If the locking device does not work, please contact Pressalit.</p>
<p>The "extended opening" mechanism is not working.</p>	<p>The sensor has detected a person and thinks it is a normal toilet visit.</p>
<p>No flashing light.</p>	<p>Reset the electronics by closing the lid for a minimum of 5 seconds. If this does not work, follow the instructions or visit the website www.pressalitseats.com</p>

Troubleshooting

What does two blinks mean?	The batteries have enough power.
What does ten blinks mean?	The seat has gone into extended open mode and stays open for at least five minutes.
Are the rays from the console tube dangerous?	No more than the rays from your remote control.
What batteries are required?	2 AAA (LR3 – 1.5V) high quality alkaline batteries. Rechargeable batteries can also be used, but are not recommended, as they typically lose power over time.
Can the lid close while you are sitting on the toilet?	<ul style="list-style-type: none">- No. The lid is open for a minimum of 90 seconds. After this, it checks for movement every 15 seconds.- If the lid falls down, it might be due to oblique porcelain. Check the mounting instructions regarding uneven washers.- Tighten the fitting – if it is not sufficiently tight, the seat/lid will have difficulty finding its centre of gravity when open.
The key to replace the batteries has been lost.	A new key and instruction manual can be ordered at www.pressalitseats.com

<p>How do you clean the console tube?</p>	<p>Clean it with the same agent as the rest of the toilet seat, i.e. regular soapy water, not alcohol, WC cleaner, etc. The console cannot be showered off. Remove the seat before cleaning and do not leave it wet. Also see 'Cleaning'.</p>
<p>Using the AutoClose® seat, even though the batteries are dead?</p>	<p>The seat can be closed manually. It makes a click when the seat/lid are closed, which is completely normal (the lock disengages). The Soft Close-function still works.</p> <p>The AutoClose® function reactivates following a change of batteries.</p>
<p>How do you remove the locking module from the console tube?</p>	<p>Using the key attached to the backside of this manual. It is also possible to order an extra key from Pressalit.</p>
<p>Why can't the locking module be pressed into the console again?</p>	<p>The gears must first fall correctly into place. Also see 'Replacing the batteries'</p>
<p>Seat/lid makes a loud click sound when it closes?</p>	<p>This is completely normal. The sound is a sign that the seat/lid are being released for closing.</p>
<p>Seat/lid falls against the wall?</p>	<ul style="list-style-type: none"> - Make sure that the QR buttons are in place and popped out. - Use the diagonal washer if the porcelain is oblique.

PRESSALIT® seats

Pressalit A/S

Pressalitvej 1
DK-8680 Ry

Tel. +45 8788 8788
Fax +45 8788 8789

pressalit@pressalit.com
www.pressalitseats.com

